

# GAW technologies – your partner in excellence

Industrial Plants & Key Components





GAW technologies – a GAW Group company – provides a guarantee of technological expertise in the international paper and board industry and in other industrial segments. This is particularly true for the production of pigment, the preparation of coating colour and coating compounds, starch and chemicals, or the cleaning and recycling of process wastewater that contains pigment.

Based on the specific needs of our clients, GAW designs tailor-made customized technologies ranging from concept development, consulting and engineering via logistics, supervision and commissioning through to customer training and after sales service. All key components for GAW industrial plants, whose design and manufacturing require special knowledge and experience, are made at our production site in Graz, Austria.

GAW ensures the timely start-up of your plant with the corresponding cost-benefit potential via precise project planning, well-founded process technology with associated automation, and effective project management.

Research and development have always been a high priority at GAW technologies. Up to ten percent of the company's turnover is spent on research and development and on order-related development each year. The technical centre, equipped with GAW key components, pilot systems and extensive laboratory equipment, is available for development projects, pilot trials and test series from, for and with our customers.

### SUPPLY, UNLOADING AND STORAGE

In the area of delivery, unloading and storage, media are pumped via a fine filter into the storage container. The delivery of the products is mostly by truck, railway wagon or container.



1



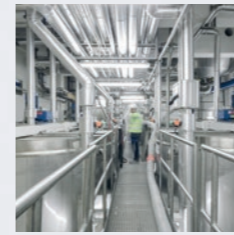
### STARCH PREPARATION

Starch powder is mixed with water to form a slurry and reduced or cooked depending on the application.



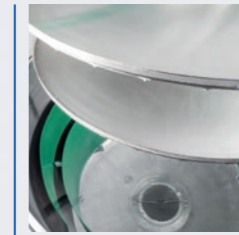
### DISPERSING MACHINE

In the dispersing machine, the heart of the coating kitchen, pigments and additives are dispersed into a coating.



### COATING COLOUR STORAGE

The dispersion is pumped into the coating colour storage and gently stirred to prevent segregation and sedimentation.



### DEAERATOR

Deaerators extract air from the coating compound, enabling the bubble-free coating application on the paper.



### WORKING STATION

The working station is a circulatory system, via which homogenized coating colour, surface glue and other coating agents from the storage containers of the coating colour kitchen are pumped via filters into working containers. They are then pumped via further filters to the coating heads.



### GCC PREPARATION

The GAW Ultramill grinds calcium carbonate into fillers and the finest coating pigment. The system achieves fineness levels of 60% ≤ 2 microns, to 75% ≤ 2 microns, up to 90%, 95% and 98% ≤ 2 microns.

### CHEMICALS PREPARATION

Auxiliary substances are also referred to as additives. They are either mixed directly into the paper stock or applied to the paper at certain points on the paper machine or by a coater.

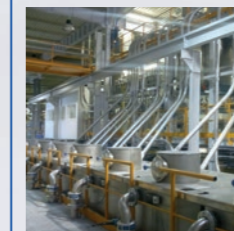


### HEAT RECOVERY SYSTEM

The heat recovery system uses the heat energy that escapes while cooking the starch.

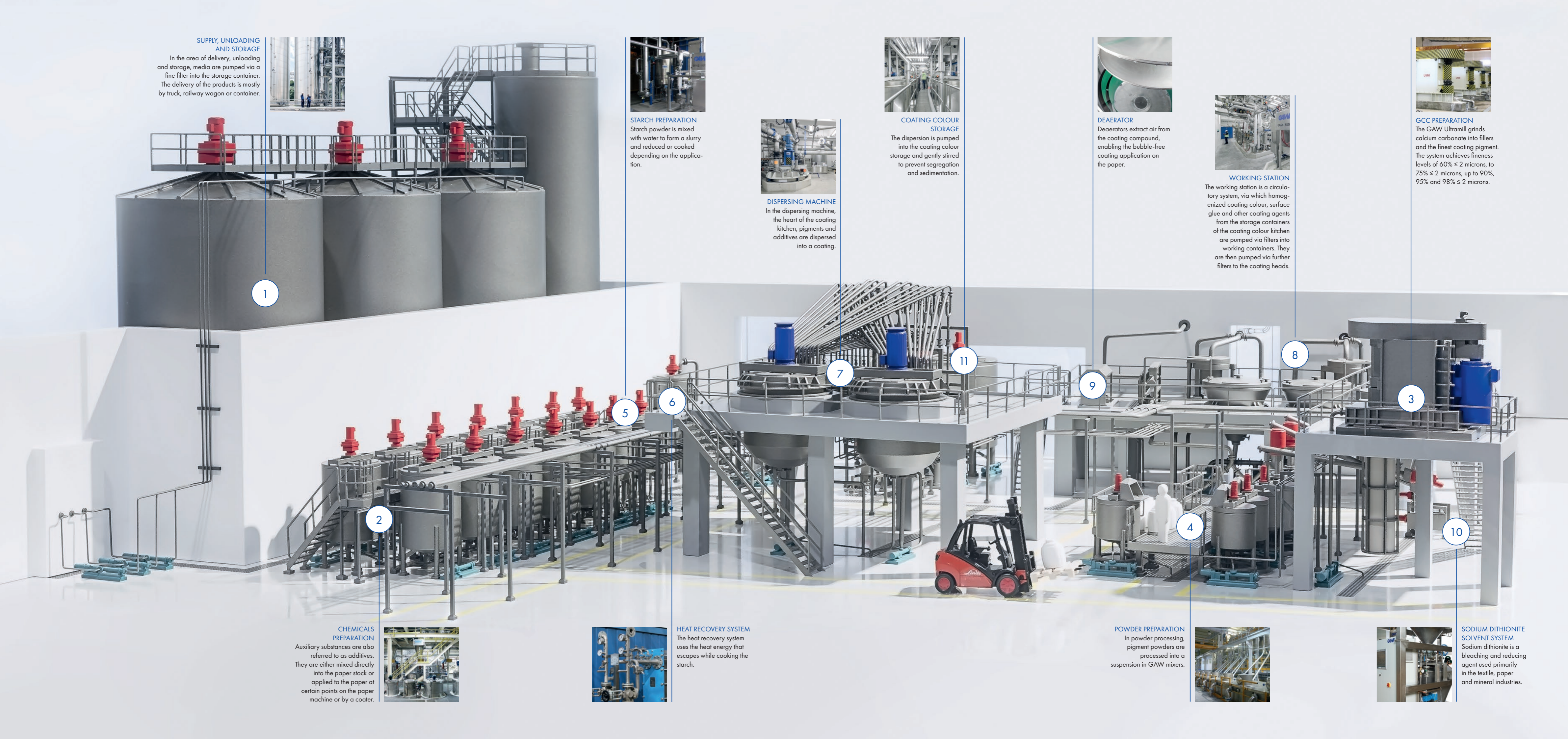
### POWDER PREPARATION

In powder processing, pigment powders are processed into a suspension in GAW mixers.



### SODIUM DITHIONITE SOLVENT SYSTEM

Sodium dithionite is a bleaching and reducing agent used primarily in the textile, paper and mineral industries.



GAW technologies GmbH

Puchstrasse 76 / PF 64  
8020 Graz, Austria  
Tel.: +43 (0) 316 27 04-0  
Fax: +43 (0) 316 27 32 66  
office@gaw.at

